

**SONY**

# Manual for XCG Series Updater

IP&S PPG PD2 D1-3

Copyright 2016 Sony Corporation

秘

## Step 0

This “XCG-Updater2015-b3.exe” is the update tool for XCG-CG series.

(if you update XCG-C series camera by this tool, it updates the mass production version.)

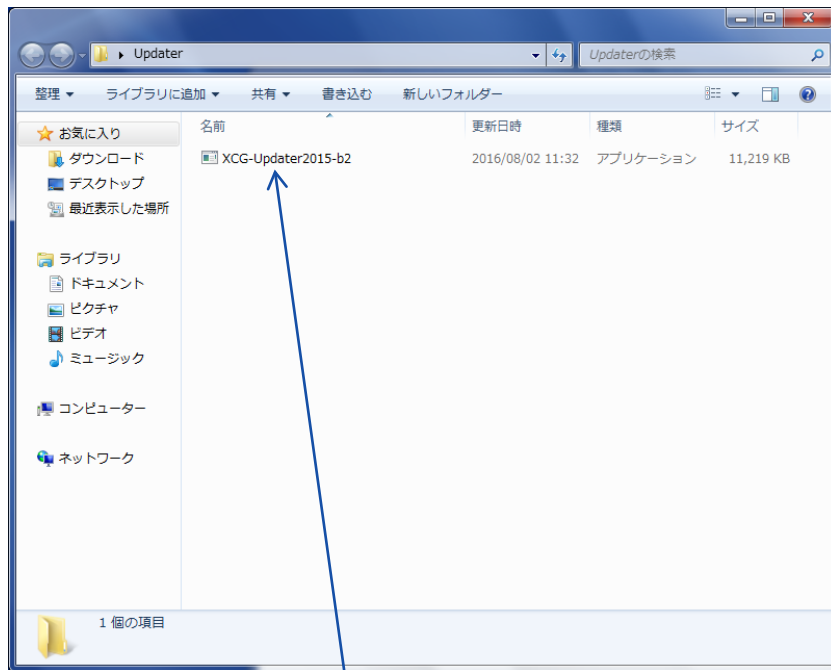
The Operation environment of PC

OS : Microsoft Windows Vista/7/8.1 (32/64bit)

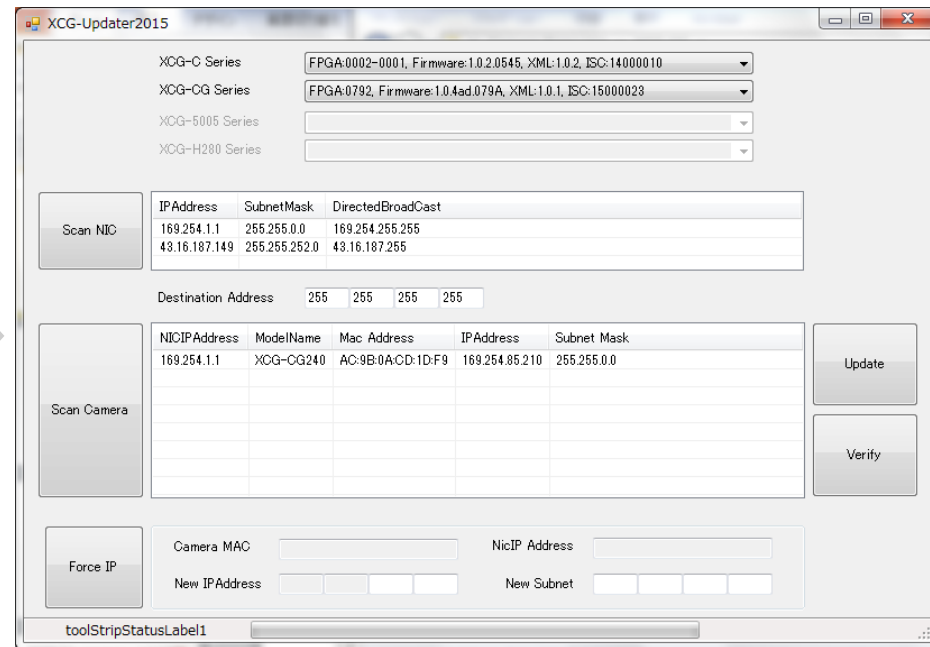
Driver : It is not necessary of XC-SDK and ZCL-SDK.

# Step1

Connect camera with PC via network and open updater.



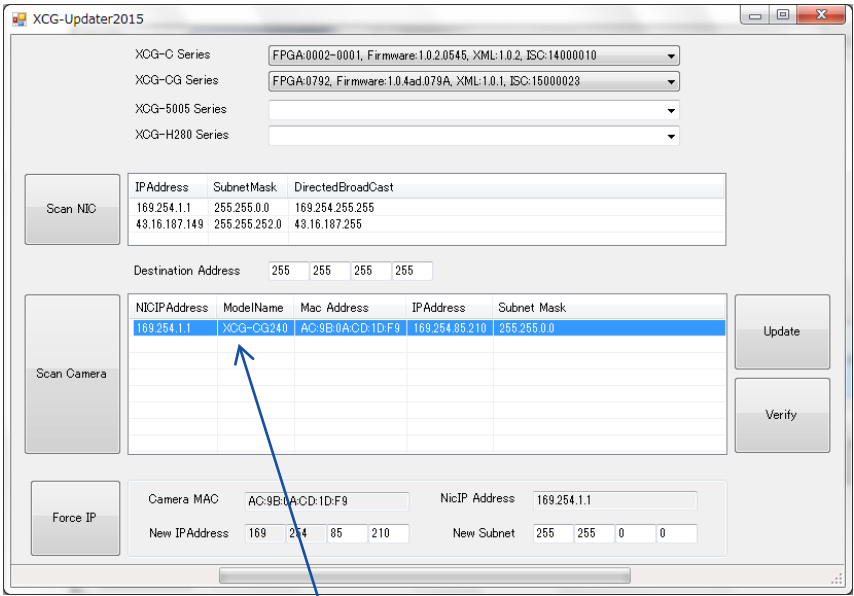
Please open the updater.



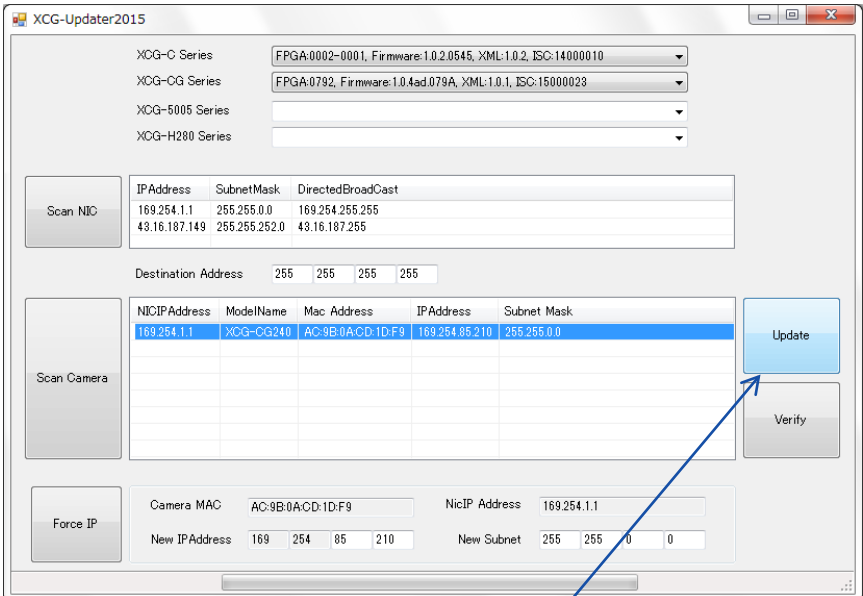
The updater is opened.

# Step2

Select camera and start update.



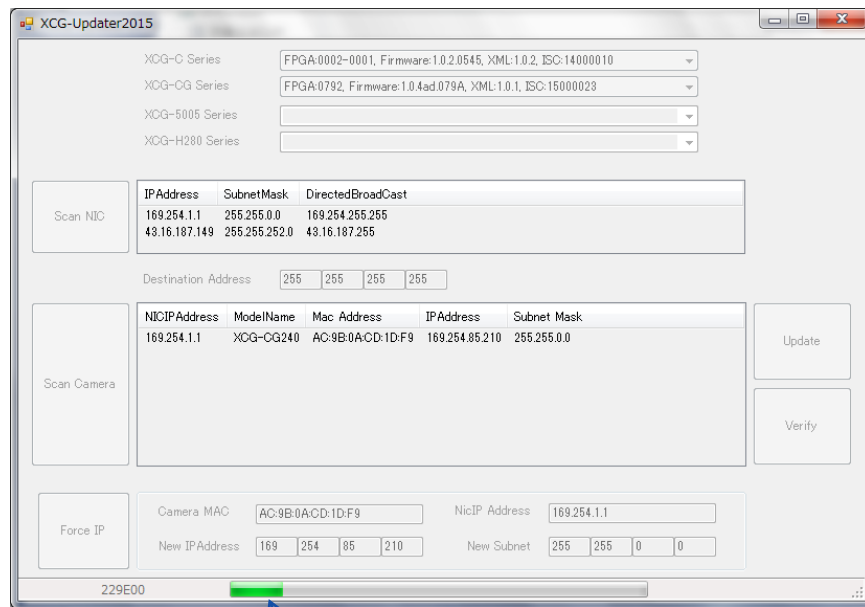
Please select the camera which should be updated.



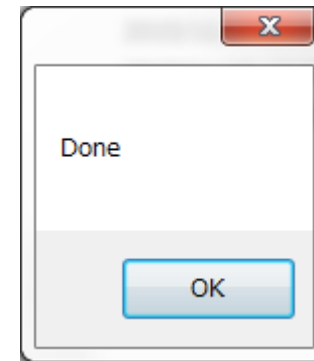
Please click 'Update'.

# Step3

Finish update and remove the camera.



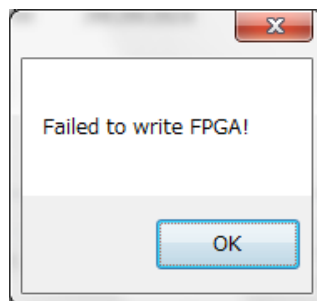
Now updating...



After finishing update, please click 'OK'.  
Then you can remove the camera.  
(Update is correctly completed!)

# Troubleshooting

When 'error message' appears, please check following things.

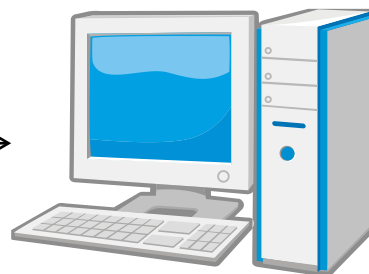


Error message window

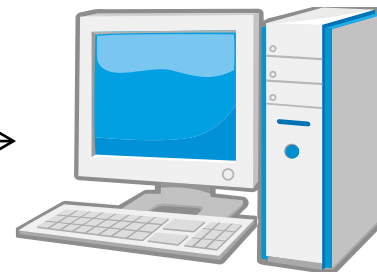
## A Representative Cause



Lan Cable



PC for updater



Other PCs

Please disconnect other PCs!

If other PCs have already connected with the camera via network, update can not be implemented.  
Therefore please check whether other PCs are connected or not, and if so please disconnect other PCs during update.

# SONY

SONYはソニー株式会社の登録商標または商標です。

各ソニー製品の商品名・サービス名はソニー株式会社またはグループ各社の登録商標または商標です。その他の製品および会社名は、各社の商号、登録商標または商標です。