

## Firmware Update Operation for FCB-EV series version 4.00 or later.

### [Overview]

This document describes detailed operation for firmware update

### [Preparation]

Followings show operation overview.

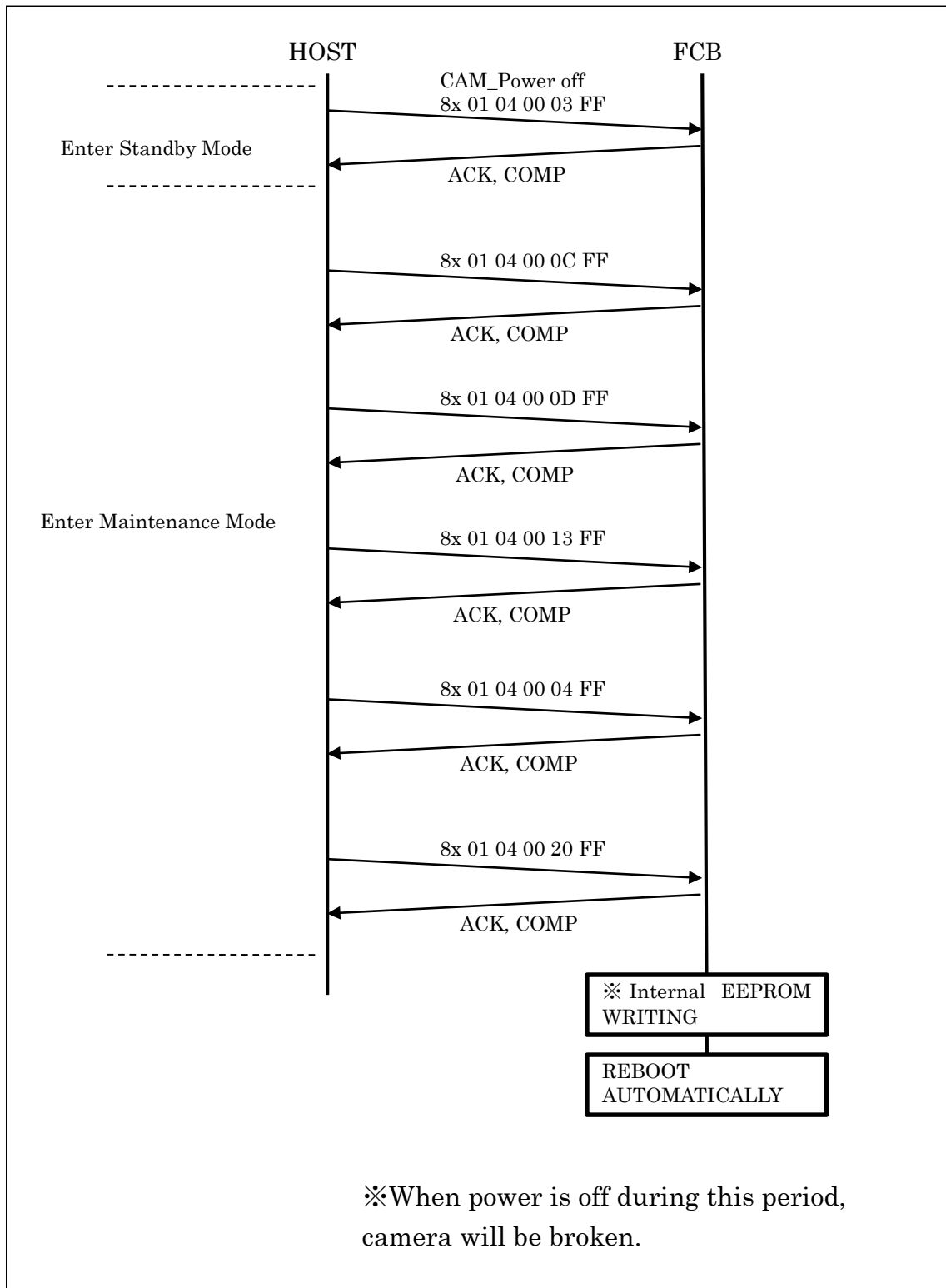
1. Host sends mode change command to enter firmware update mode.
2. FCB camera module will reboot automatically to enter maintenance mode
3. Host sends firmware binary with followings serial port setting
4. FCB camera module will reboot automatically.
5. Host sends commands for update and reset command.

### Serial Port Setting required during maintenance mode only

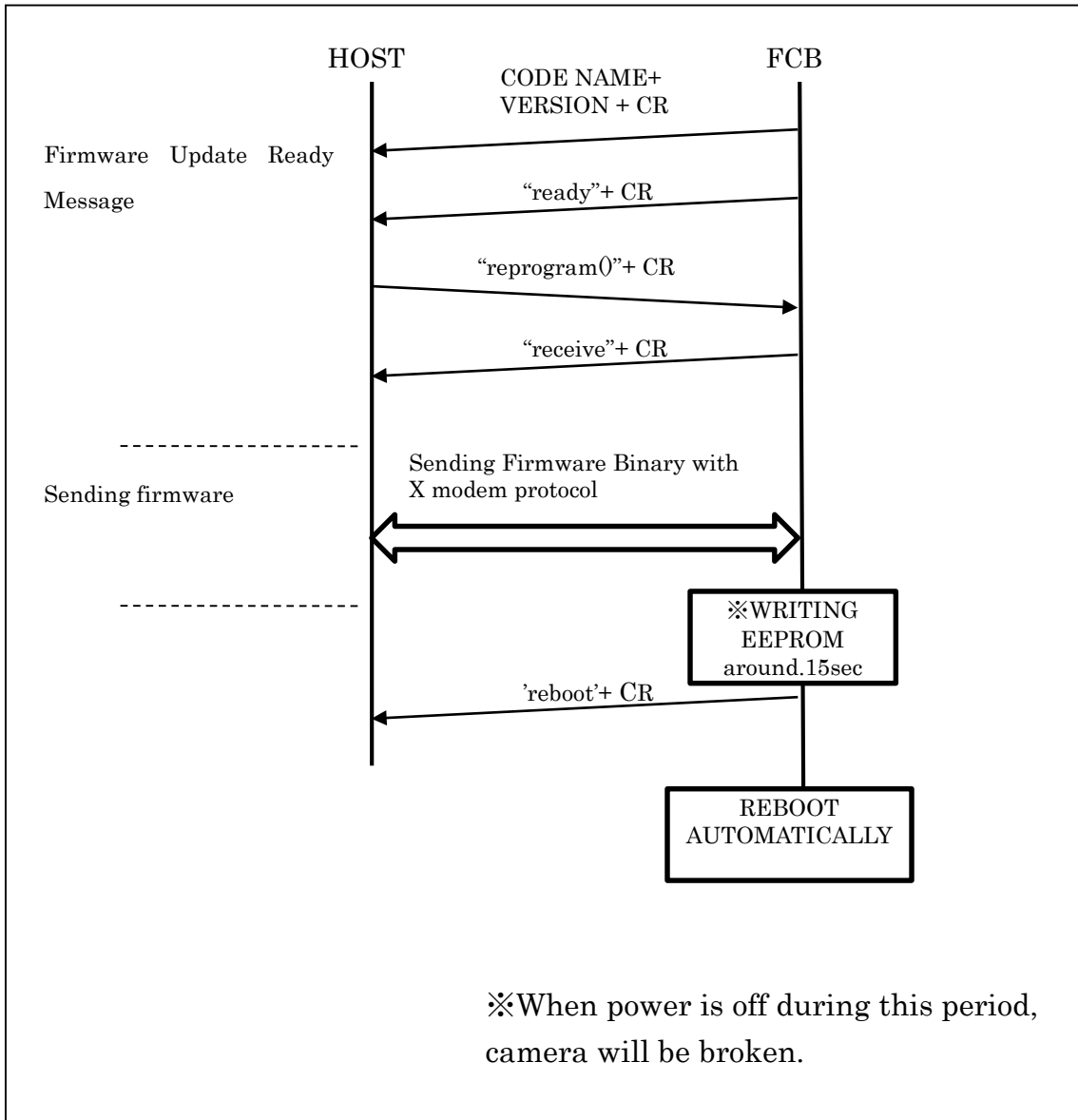
Communication Speed	115200 bps
Data bit	8 bit
Parity	none
Stop bit	1 bit
Flow control	None

# 【Operation】

## Enter Maintenance Mode



Maintenance Mode (change HOST serial port setting to 115200bds first)



Finalization

