

**Product change Notice****FCB-EX series – DC-DC converter modification****Models :**

FCB-EX1020, FCB-EX1020P, FCB-EX15E, FCB-EX15EP  
Serial numbers to be informed later.

**Modification :**

DC-DC converter inside FCB-EX cameras will be changed to maintain stable delivery.

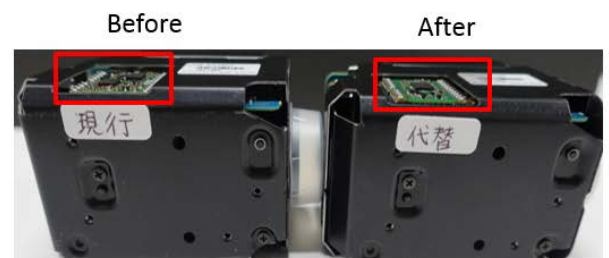
**Comments :**

Specification: no change

EMC emission: No change

Power consumption: reduced by 0.4W

Appearance: On FCB-EX15EP and FCB-EX15E, the change of DC-DC converter will be noticeable:

**FCB-EX15E/P External Appearance**

The new circuit board will be located a bit upper side, however it is not over the FCB outside surface.

**Schedule :**

From end November 2017 production