

**SONY**

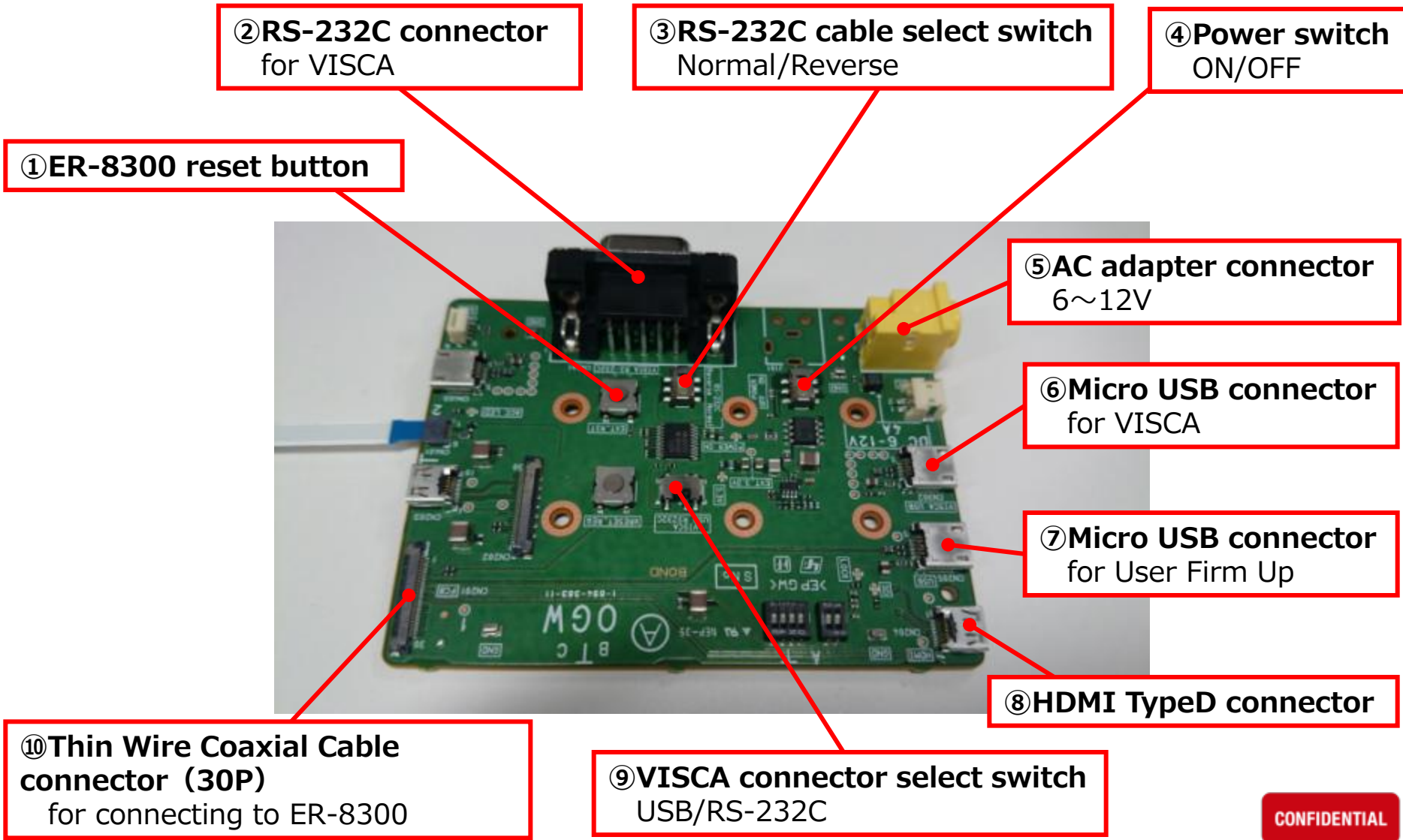
**CONFIDENTIAL**

# **FCB-ER8300 Jig Board User's Manual**

# Table of contents

- 1 . Outline View
- 2 . Display to the monitor
- 3 . Control FCB via MicroUSB
- 4 . Control FCB via RS-232C
- 5 . User Firm Up

# 1. Outline View



② RS-232C connector for VISCA

③ RS-232C cable select switch Normal/Reverse

④ Power switch ON/OFF

① ER-8300 reset button

⑤ AC adapter connector 6~12V

⑥ Micro USB connector for VISCA

⑦ Micro USB connector for User Firm Up

⑧ HDMI TypeD connector

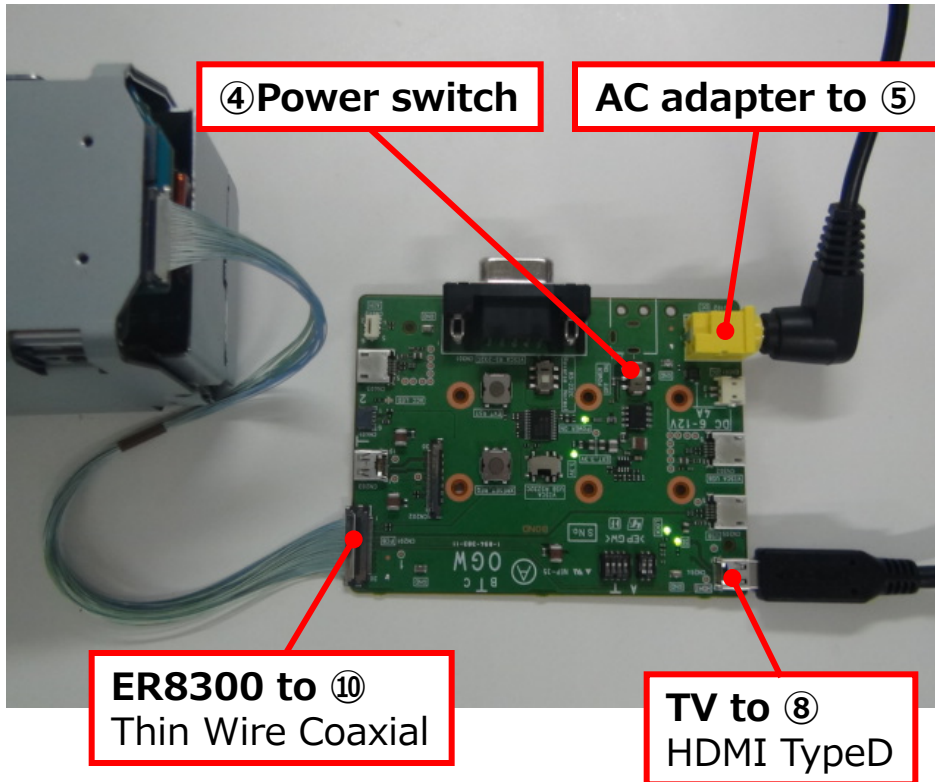
⑩ Thin Wire Coaxial Cable connector (30P) for connecting to ER-8300

⑨ VISCA connector select switch USB/RS-232C

CONFIDENTIAL

## 2. Display to the monitor

### ◆ Setting



### ◆ Procedure

- Connect cables like left photo.
- Slide the ④ Power switch ON.
- ER8300 outputs HDMI signal in seconds.

# 3. Control FCB via RS-232C

## ◆ Setting

PC to ②  
RS-232C

AC adapter to ⑤

④ Power switch

ER8300 to ⑩  
Thin Wire Coaxial

③ Select "Normal" or "Reverse"  
depend on a cable type.

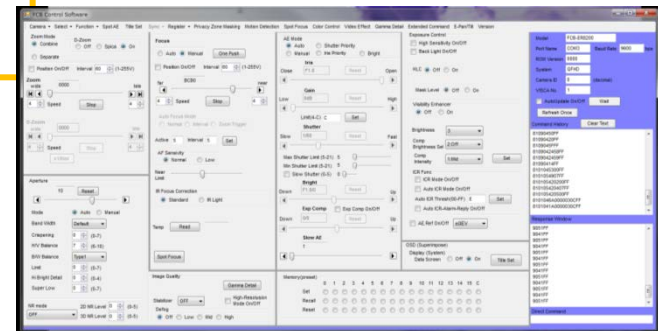
⑨ Select "RS232C" side

## ◆ Procedure

- Connect cables like left photo
- Slide the ④ Power switch ON.
- Execute "FCB Control Software.exe".

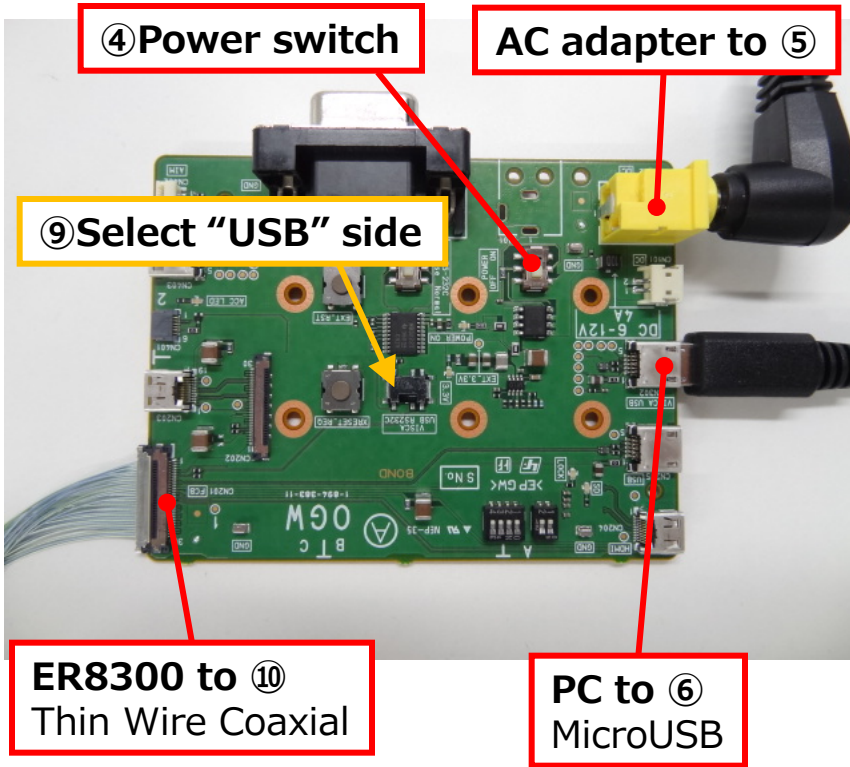


- Software recognize "COM Port" automatically and start with auto setting "Baud Rate".



# 4. Control FCB via MicroUSB

## ◆ Setting

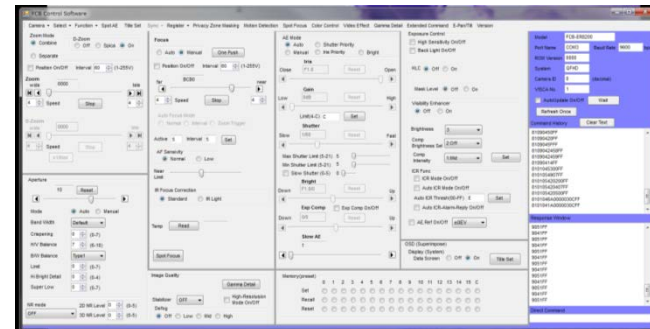


## ◆ Procedure

- Download and Install "CP210x USB to UART Bridge VCP Drivers" in your PC from SILICON LABS HP.
- Connect cables like left photo.
- Slide the ④ Power switch ON.
- Execute "FCB Control Software.exe".



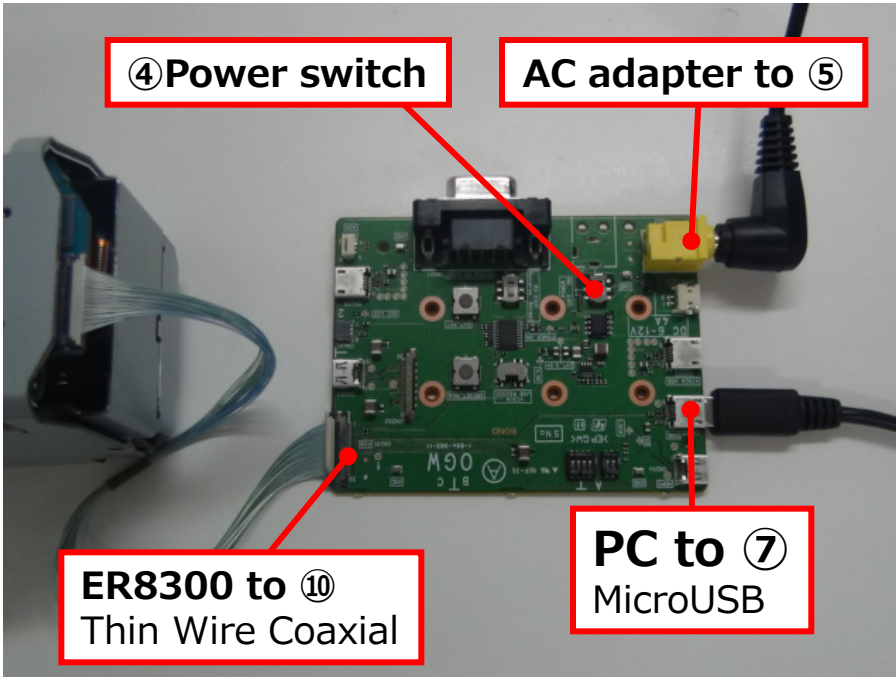
- Software recognize "COM Port" automatically and start with auto setting "Baud Rate".



# 5. User Firmware Update

## ◆ Setting

## ◆ Procedure



※ Reference another manual