



EVI-HD7V



EVI-HD3V



EVI-HD1



EVI-HD Series

High Resolution Cameras

EVI-HD7V
EVI-HD3V
EVI-HD1

The new HD robotic cameras from Sony are ideally suited for videoconferencing, distance learning, corporate training, and courtrooms.

EVI-HD7V EVI-HD3V EVI-HD1

Enhance your remote presence experience with HD.



Sony, the world's leading robotic camera manufacturer, is expanding its HD Pan/Tilt/Zoom (P/T/Z) camera lineup with two new HD robotic cameras ideally suited for videoconferencing, distance learning, corporate training, and courtrooms.

Whether you need standard definition, 720p, 1080i, or 1080p for your application, there is a Sony P/T/Z HD camera to capture your true-to-life images.

The all-in-one design of the EVI-HD7V and EVI-HD3V P/T/Z cameras combines Sony's expertise in HD technology with its renowned low-noise pan/tilt mechanism. The capture of intricate visual details creates the feeling of being in the same room with remote participants around the globe.

The EVI-HD7V achieves digital image acquisition of up to 1080p/60*1 for exceptional picture quality. The EVI-HD3V provides superb image quality of up to 720p/60 at an affordable price.

Both cameras are equipped with a DVI-I interface, enabling easy connection to a PC monitor.

*1: 1080p/60 is only available for the EVI-HD7V.

EVI-HD7V



1080p/60

The EVI-HD7V delivers intricately detailed and vivid images, enhancing your videoconference or training meeting with true-to-life images of the participants.

DVI-I Interface

Thanks to its DVI-I interface, the EVI-HD7V is ideally suited for easy connection to a HD or PC monitor equipped with today's popular digital or analogue interfaces such as DVI-D and analogue component – all of which provide high-quality digital display.

EVI-HD3V



720p/60

The EVI-HD3V produces stunning HD images of up to 720p/60, while offering powerful cost benefits that reduces the total system cost.

DVI-I Interface

Thanks to its DVI-I interface, the EVI-HD3V is ideally suited for easy connection to a HD or PC monitor equipped with today's popular digital or analogue interfaces such as DVI-D and analogue component – all of which provide high-quality digital display.

EVI-HD1



Multi-format Video Outputs from NTSC/PAL to Full HD

With the flip of a switch on the EVI-HD1, users can easily change between HD and SD output. This popular P/T/Z camera allows for SD to HD migration and can be used in combination with any number of codecs and other professional audio/video systems.

HD-SDI Interface

The EVI-HD1 comes equipped with an HD-SDI interface that allows for long-distance transmission of HD images without degrading the picture quality. The EVI-HD1 is ideally suited for small to medium-sized conference rooms, auditoriums, and classrooms and can integrate with professional audio/video systems without the need for interface conversion.

EVI-HD Series Specifications

www.pro.sony.eu/vision
www.image-sensing-solutions.eu

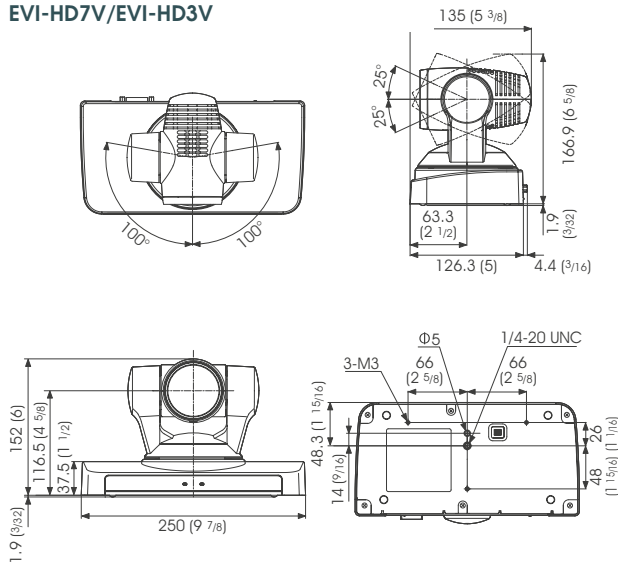
Camera

	EVI-HD7V	EVI-HD3V	EVI-HD1
Image sensor	1/3-type CMOS		
Signal system	1080p/59.94, 1080p/50, 1080i/59.94, 1080i/50, 1080p/29.97, 1080p/25, 720p/59.94, 720p/50, 720p/29.97, 720p/25, 640 x 480p/59.94	720p/59.94, 720p/50, 720p/29.97, 720p/25, 640 x 480p/59.94	1080i/59.94, 1080i/50, 1080p/29.97, 1080p/25, 720p/59.94, 720p/50, 720p/29.97, 720p/25 NTSC, PAL
Lens	10x optical zoom, 40x with digital zoom, f=3.4 to 33.9 mm, F1.8 to F2.1		
Minimum object distance	100 mm (wide)		
Horizontal viewing angle	8° (tele) to 70° (wide) at HD signal output		
Focus system	Auto/Manual		
Minimum illumination	15 lx (50 IRE, F1.8)		
Exposure control	Auto* / Manual / Priority AE* / Exposure compensation / Bright		
Shutter speed	1/60 to 1/10,000 sec. (59.94 Hz system), 1/50 to 1/10,000 sec. (50 Hz system)		1/2 to 1/10,000 sec.
Gain	Auto / Manual (-3 to +18 dB)		
White balance	Auto / Indoor / Outdoor / One push auto / Manual		
Effects	-		B&W, Nega Art
S/N ratio	50 dB		
Pan/Tilt	Pan: ±100° (Max. speed 300°/sec.) Tilt: ±25° (Max. speed 125°/sec.)		
Position preset	6 positions		
Video output	DVI-I (Digital and Analogue)		HD: HD-SDI, Analogue Component (Y/Pb/Pr) SD: VBS, Y/C
Control terminal	RS-232C (8-pin mini DIN) control (VISCA)		
Power requirements	12 V DC (10.8 to 13.0 V DC)		
Power consumption	Max. 26.4 W (at DC 12 V)		Max. 30 W (at DC 12 V)
Operating temperature	0 to 40°C (32 to 104°F)		
Storage temperature	-20 to 60°C (-4 to 140°F)		
Dimensions (W x H x D)	250 x 152 x 135 mm (9 7/8 x 6 x 5 3/8 inches) (without protrusions)		259 x 150 x 169 mm (10 1/4 x 6 x 6 3/4 inches) (without protrusions)
Mass	Approx. 1.5 kg (3 lb 5 oz)		Approx. 2 kg (4 lb 7 oz)
Supplied accessories	AC adaptor, AC power cable, IR remote commander unit, Operating instruction		

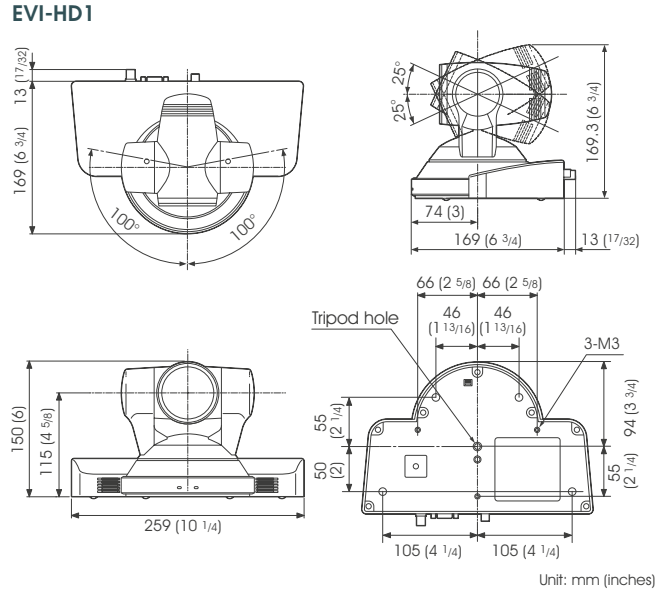
*Max gain limit is available for EVI-HD7V/HD3V.

Dimensions

EVI-HD7V/EVI-HD3V



EVI-HD1



Unit: mm (inches)

Distributed by

©2012 Sony Corporation. All rights reserved. Reproduction in whole or in part without written permission is prohibited. Features and specifications are subject to change without notice. The values for weight and dimension are approximate. "SONY", "make.believe" and "EXview HAD CCD II" are registered trademarks of Sony Corporation. All other trademarks are the property of their respective owners.

PHC_27/02/2014

SONY